

STANDARD

line

1.8 Dimensioni

1.8 Dimensions

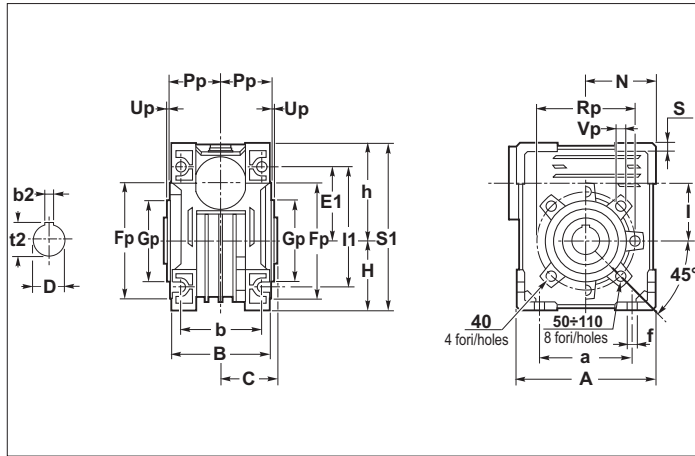
1.8 Abmessungen



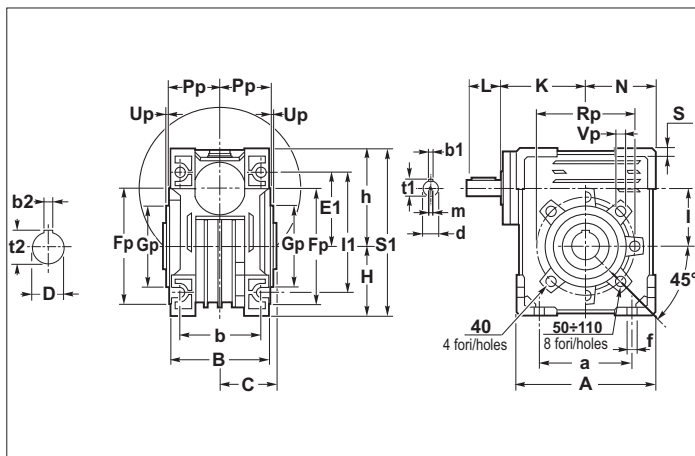
Dimensioni riduttori  
Gearboxes dimensions  
Abmessungen Getriebes

U - UI - UMI

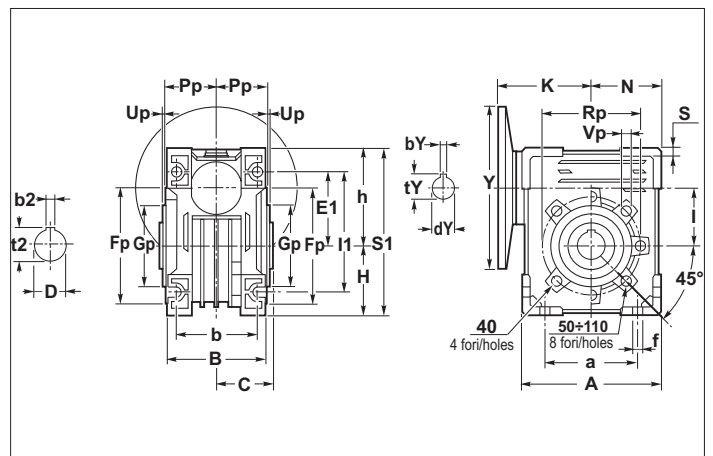
U ( 40 - 110 )



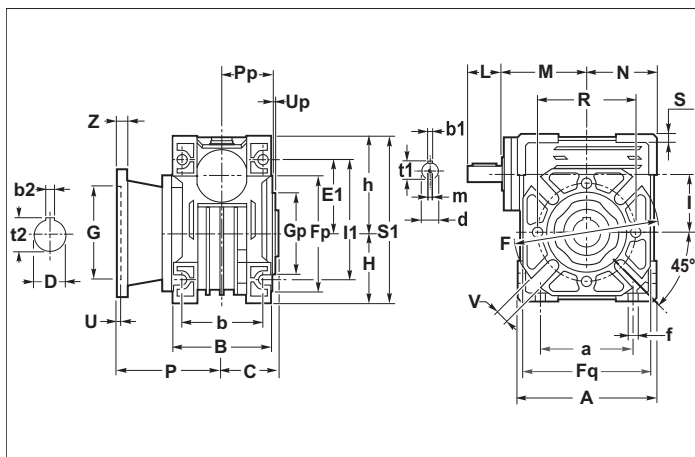
UI ( 40 - 110 )



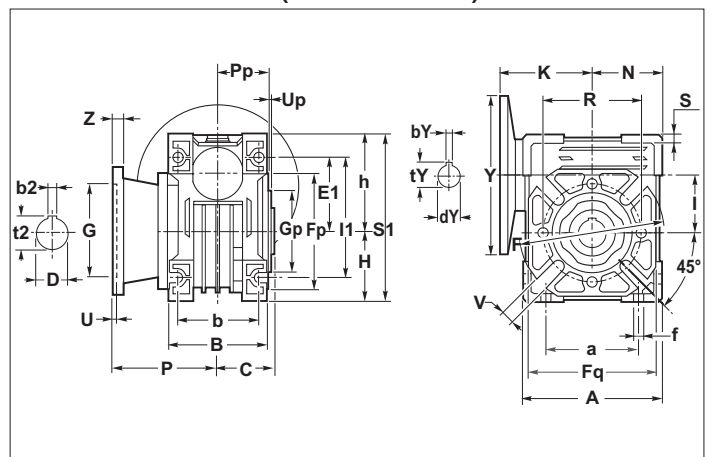
UMI ( 40 - 110 )



UI FA - FB ( 40 - 110 )

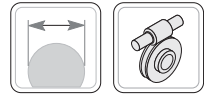


UMI FA - FB ( 40 - 110 )



Download  
2D 3D





1.8 Dimensioni

1.8 Dimensions

1.8 Abmessungen

U - UI UMI	A	a	B	b	C	D <sub>H7</sub>	d <sub>j6</sub>	E1	f	h	H	I	I1	L	M	m	N	S	S1
40	100	70	71	60	39	18	11	55	6.5	71.5	50	40	90	22	64	M5	50	6	121.5
50	120	80	85	70	46	25	14	64	8.5	84	60	50	104	30	74	M6	60	7	144
63	144	100	103	85	56	25	18	80	8.5	102	72	63	130	45	96	M6	72	8	174
75	172	120	112	90	60	28 (30)	24	93	11.5	119	86	75	153	50	105	M8	86	10	205
90	206	140	130	100	70	35	24	102	13	135	103	90	172 <sub>0</sub> <sup>+3</sup>	50	125	M8	103	11	238
110	255	170	144	115	77.5	42	28	125	14	167.5	127.5	110	207	60	142	M8	127.5	14.5	295

U - UI - UMI	Fp	Gp (e8)	Pp	Rp	Up	Vp
40	87	60	36.5	75	2.5	M6
50	100	70	43.5	85	2.5	M8
63	110	80	53	95	3	M8
75	140	95	57	115	3	M8
90	160	110	67	130	3	M10
110	200	130	74	165	3.5	M10

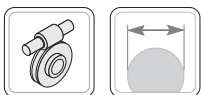
U - UI - UMI	F	Fq	G (F8)	P	R	U	V	Z																																																										
40	FA	110	60	67	75	4	9	7																																																										
	FB			97					50	FA	125	70	90	85	5	11	9	FB	120	63	FA	180	115	82	150	6	11	10	FB	112	75	FA	200	130	111	165	6	14	13	FB	160	160	110	130	5	11	12	90	FA	210	152	111	175	6	14	13	FB	250	180	122	215	6	14	16	110	FA
50	FA	125	70	90	85	5	11	9																																																										
	FB			120					63	FA	180	115	82	150	6	11	10	FB	112	75	FA	200	130	111	165	6	14	13	FB	160	160	110	130	5	11	12	90	FA	210	152	111	175	6	14	13	FB	250	180	122	215	6	14	16	110	FA	280	170	131	230	6	14	16				
63	FA	180	115	82	150	6	11	10																																																										
	FB			112					75	FA	200	130	111	165	6	14	13	FB	160	160	110	130	5	11	12	90	FA	210	152	111	175	6	14	13	FB	250	180	122	215	6	14	16	110	FA	280	170	131	230	6	14	16															
75	FA	200	130	111	165	6	14	13																																																										
	FB	160	160	110	130	5	11	12																																																										
90	FA	210	152	111	175	6	14	13																																																										
	FB	250	180	122	215	6	14	16																																																										
110	FA	280	170	131	230	6	14	16																																																										

	UMI											
	40		50		63		75		90		110	
	Y	K	Y	K	Y	K	Y	K	Y	K	Y	K
B5	120	70	140	80.5	160	95	200	118	200	128	200	152
	140		160		200		250		250		250	
	160		200		—		—		—		—	
B14	90 •	70	120	80.5	105 •	95	120	118	120	128	160	152
	105		105 •		120		140		140		128	
	—		90 •		140		160		160		130	

(•) Vedi nota in fondo a tabella 2.13

(•) See note at the bottom of table 2.13

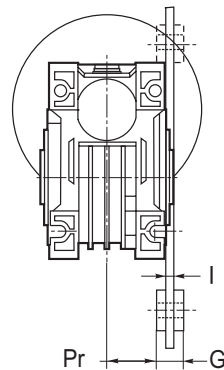
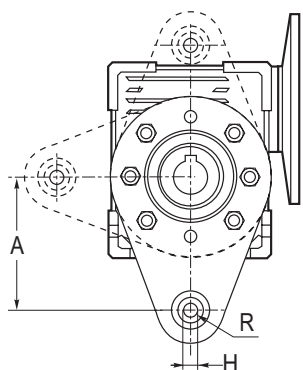
(•) Siehe Bemerkungen Tabelle 2.13 unten



**1.9 Accessori**  
**Braccio di reazione**

**1.9 Accessories**  
**Torque arm**

**1.9 Zubehör**  
**Drehmomentstütze**



UI - UMI	40	50	63	75	90	110
A	100	100	150	200	200	250
G	15	15	20	25	25	25
H	10	10	10	20	20	20
I	4	4	6	6	6	6
Pr	31	38	48.5	47.5	57.5	64.5

**1.10 Accessori**  
**Alberi lenti**

**1.10 Accessories**  
**Output shafts**

**1.10 Zubehör**  
**Abtriebswellen**

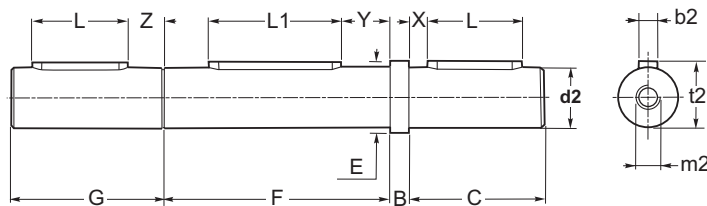
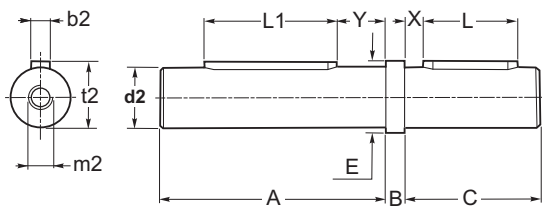
Tutti i riduttori a vite senza fine sono forniti con albero lento cavo. A richiesta, possono essere forniti alberi lenti come indicato nei disegni dimensionali.  
Le dimensioni delle linguette sono conformi alle norme UNI 6604-69.

All worm gearboxes are supplied with hollow output shaft. Output shafts as shown in the size drawings can be supplied upon request.  
Sizes of feathers comply with standards UNI 6604-69.

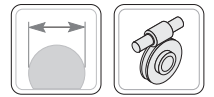
Alle Schneckengetriebe werden mit hohler Abtriebswelle geliefert. Auf Anfrage können Abtriebswellen gemäß den Maßzeichnungen geliefert werden.  
Die Abmessungen der Federn entsprechen den Normen UNI 6604-69.

Albero lento  
Single output shaft  
Einseitige Abtriebswelle

Albero lento bisporgente  
Double output shaft  
Beidseitige Abtriebswelle



	UI - UMI					
	40	50	63	75	90	110
A	76	89	109	117	137	153
B	10	10	10	10	10	10
C	40	45	60	60	80	100
d2 g6	18	25	25	28	35	42
m2	M8	M8	M8	M8	M10	M10
E	22	28	34	34	38	50
F	78	92	112	120	140	155
G	50	55	70	70	90	110
L	25	30	40	40	50	80
L1	40	50	60	60	70	80
X	8	7.5	10	10	15	10
Y	21	24	30	30	37	37
Z	18	18	20	20	25	20



## 1.11 Linguette

## 1.11 Keys

## 1.11 Federn

## Albero Entrata - Input Shaft - Antriebswelle

UI		
d	b <sub>1</sub>	t <sub>1</sub>
9	3	10.2
11	4	12.5
14	5	16.0
16	5	18.0
18	6	20.5
19	6	21.5
24	8	27.0
25	8	28.0
28	8	31.0
30	8	33.0
32	10	35.0
35	10	38.0
38	10	41.0
42	12	45.0
45	14	48.5
48	14	51.5
50	14	53.5
55	16	59.0
65	18	69.0

UMI - PAM B5				
PAM B5	Y	dY	bY	tY
56	120	9	3	10.4
63	140	11	4	12.8
71	160	14	5	16.3
80	200	19	6	21.8
90	200	24	8	27.3
100	250	28	8	31.3
112	250	28	8	31.3
132	300	38	10	41.3
160	350	42	12	45.3
180	350	48	14	51.8
200	400	55	16	59.3

UMI - PAM B14				
PAM B14	Y	dY	bY	tY
56	80	9	3	10.4
63	90	11	4	12.8
71	105	14	5	16.3
80	120	19	6	21.8
90	140	24	8	27.3
100	160	28	8	31.3
112	160	28	8	31.3
132	200	38	10	41.3

## Albero Uscita - Output Shaft - Abtriebswelle

Albero Forato U - UI - UMI		
D	b <sub>2</sub>	t <sub>2</sub>
14	5	16.3
18	6	20.8
19	6	21.8
24	8	27.3
25	8	28.3
28	8	31.3
30	8	33.3
32	10	35.3
35	10	38.3
38	10	41.3
42	12	45.3
45	14	48.8
48	14	51.8
50	14	53.8
55	16	59.3
65	18	69.4

Albero Pieno U - UI - UMI		
d <sub>2</sub>	b <sub>2</sub>	t <sub>2</sub>
9	3	10.2
11	4	12.5
14	5	16.0
16	5	18.0
18	6	20.5
19	6	21.5
24	8	27.0
25	8	28.0
28	8	31.0
30	8	33.0
32	10	35.0
35	10	38.0
38	10	41.0
42	12	45.0
45	14	48.5
48	14	51.5
50	14	53.5
55	16	59.0
65	18	69.0