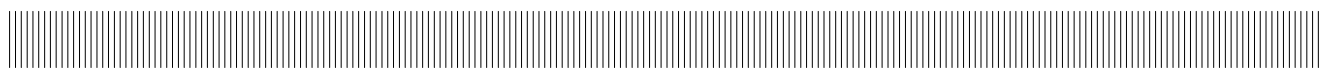


| | | | | |
|---|--|---|---|---|
|  | EQUIPAGGIAMENTI TECNICI LAVAGGIO | ATTACCO RAPIDO A SFERA 250 BAR BALL QUICK COUPLING 250 BAR ARS 250 |  | <div style="border: 2px solid black; padding: 2px; display: inline-block; font-weight: bold;">5</div> |
| | | |  | |

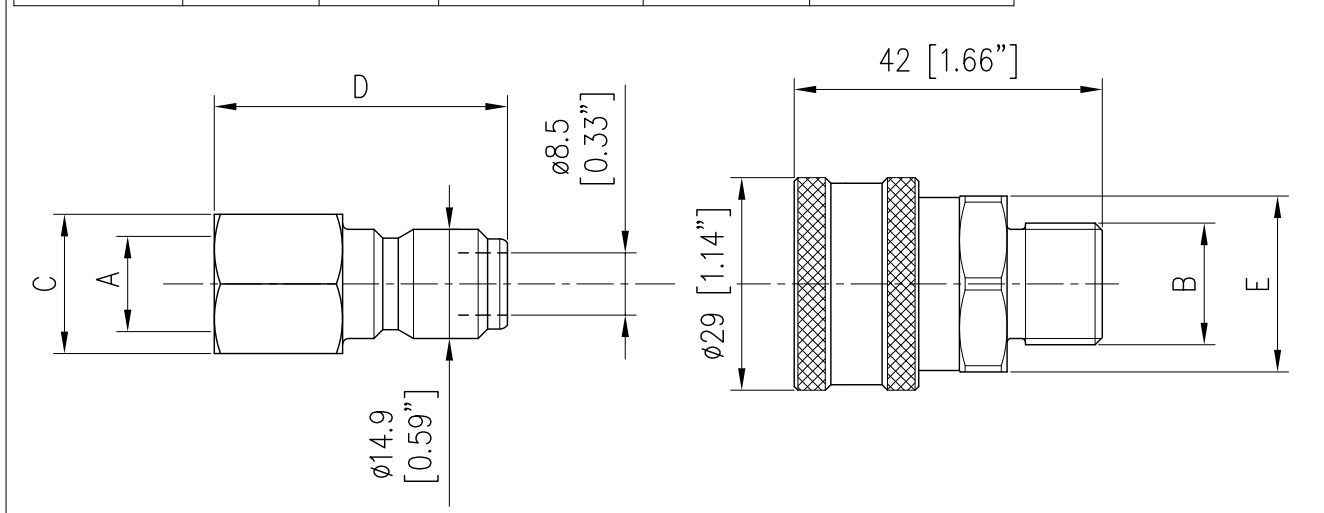


SPECIFICHE TECNICHE
SPECIFICATIONS

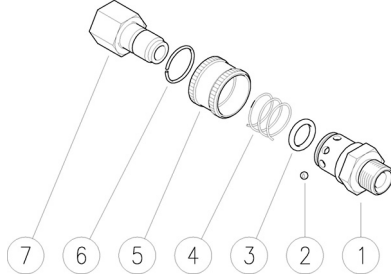
| | |
|--|-----------------------------|
| - PRESSIONE NOMINALE RATED PRESSURE | 250 bar – 25 MPa (3650 psi) |
| - PRESSIONE CONSENTITA PERMISSIBLE PRESSURE | 280 bar – 28 MPa (4050 psi) |
| - PORTATA MASSIMA MAX FLOW RATE | 30 l/min (8 USG p.m.) |
| - TEMPERATURA MASSIMA MAX WORKING TEMPERATURE | 90° C (195 °F) |
| PERNO IN ACCIAIO NICHELATO E CORPO IN OTTONE NICHELATO CON GUARNIZIONI OR IN NBR PIN IN NICKEL PLATED STEEL AND BODY IN NICKEL PLATED BRASS WITH NBR O RINGS | |

MISURE D'INGOMBRO
OVERALL DIMENSIONS

| CODICE CODE | A | B | C | D | E |
|----------------|--------|--------|---------------|------------|---------------|
| 26.2010.00 | | G3/8 M | | | ES.24 [0.94"] |
| 26.2010.10 | | G3/8 F | | | ES.24 [0.94"] |
| 26.2010.20 | | G1/4 F | | | ES.24 [0.94"] |
| 26.2010.30 | | G1/2 F | | | ES.27 [1.06"] |
| 26.2010.40 | | G1/2 M | | | ES.24 [0.94"] |
| 26.2015.61 | G3/8 F | | ES.22 [0.87"] | 40 [1.57"] | |
| 26.2016.61 | G1/4 F | | ES.19 [0.75"] | 40 [1.57"] | |
| 26.2023.61 | G3/8 M | | ES.19 [0.75"] | 42 [1.65"] | |
| 26.2024.61 | G1/2 M | | | 42 [1.65"] | |



- 26.2010.00 ARS250 B att.rapido a sfera G3/8M
- 26.2010.10 ARS250 B att.rapido a sfera G3/8F
- 26.2010.20 ARS250 B att.rapido a sfera G1/4F
- 26.2010.30 ARS250 B att.rapido a sfera G1/2F



- 26.2015.61 ARS250 A nipplo a sfera G3/8 F
- 26.2016.61 ARS250 A nipplo a sfera G1/4 F
- 26.2023.61 ARS250 A nipplo a sfera G3/8 M
- 26.2024.61 ARS250 A nipplo a sfera G1/2 M

| Pos. | Codice | Descrizione | Q.tà | K1 | K2 | K3 | K4 |  |
|------|------------|--------------------------------|------|----|----|----|----|---|
| 1 | 26.2011.31 | Corpo ARS250 G3/8M (1) | 1 | | | | | 5 |
| 1 | 26.2021.31 | Corpo ARS250 G3/8F (2) | 1 | | | | | 5 |
| 1 | 26.2022.31 | Corpo ARS250 G1/4F (3) | 1 | | | | | 5 |
| 1 | 26.2025.31 | Corpo ARS250 G1/2F (4) | 1 | | | | | 5 |
| 2 | 14.7405.00 | Sfera 5/32" inox | 8 | • | | | | 10 |
| 3 | 10.3177.00 | An.OR 2,62x12,37 mm | 1 | • | | | | 10 |
| 4 | 26.2012.51 | Molla 1,3x22x13mm inox | 1 | • | | | | 10 |
| 5 | 26.2013.31 | Ghiera ARS250 | 1 | • | | | | 5 |
| 6 | 26.2014.51 | An. elast. 1,2x19 mm inox | 1 | | | | | 10 |
| 7 | 26.2015.61 | ARS250 A nipplo a sfera G3/8 F | 1 | | | | | 25 |
| 7 | 26.2016.61 | ARS250 A nipplo a sfera G1/4 F | 1 | | | | | 25 |
| 7 | 26.2023.61 | ARS250 A nipplo a sfera G3/8 M | 1 | | | | | 25 |
| 7 | 26.2024.61 | ARS250 A nipplo a sfera G1/2 M | 1 | | | | | 25 |

| Kit | Codice | Descrizione |  |
|-----|------------|-------------------------|---|
| K1 | 26.2017.24 | Kit ric. ARS250 4x10pz. | 1 |

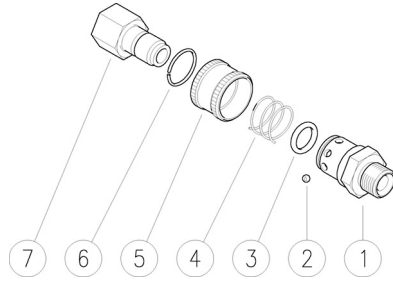
(1) 26.2010.00 (2) 26.2010.10 (3) 26.2010.20 (4) 26.2010.30

26.2010.00 ARS250 B ball-type coupler 3/8M Bsp

26.2010.10 ARS250 B ball-type coupler 3/8F Bsp

26.2010.20 ARS250 B ball-type coupler 1/4F Bsp

26.2010.30 ARS250 B ball-type coupler 1/2F Bsp



26.2015.61 ARS250 A ball-type nipple 3/8F Bsp

26.2016.61 ARS250 A ball-type nipple 1/4F Bsp

26.2023.61 ARS250 A ball-type nipple 3/8M Bsp

26.2024.61 ARS250 A ball-type nipple 1/2M Bsp

| Pos. | P/N | Description | Q.ty | K1 | K2 | K3 | K4 | |
|------|------------|------------------------------------|------|----|----|----|----|----|
| 1 | 26.2011.31 | Housing -ARS250, 3/8M Bsp (1) | 1 | | | | | 5 |
| 1 | 26.2021.31 | Housing -ARS250, 3/8F Bsp (2) | 1 | | | | | 5 |
| 1 | 26.2022.31 | Housing -ARS250, 1/4F Bsp (3) | 1 | | | | | 5 |
| 1 | 26.2025.31 | Housing -ARS250, 1/2F Bsp (4) | 1 | | | | | 5 |
| 2 | 14.7405.00 | Ball, 5/32" Sst. | 8 | • | | | | 10 |
| 3 | 10.3177.00 | O-ring, 2,62x12,37 mm | 1 | • | | | | 10 |
| 4 | 26.2012.51 | Spring, 1,3x22x13mm Sst. | 1 | • | | | | 10 |
| 5 | 26.2013.31 | Ring nut, ARS250 | 1 | • | | | | 5 |
| 6 | 26.2014.51 | Snap ring, 1,2x19 mm Sst. | 1 | | | | | 10 |
| 7 | 26.2015.61 | ARS250 A ball-type nipple 3/8F Bsp | 1 | | | | | 25 |
| 7 | 26.2016.61 | ARS250 A ball-type nipple 1/4F Bsp | 1 | | | | | 25 |
| 7 | 26.2023.61 | ARS250 A ball-type nipple 3/8M Bsp | 1 | | | | | 25 |
| 7 | 26.2024.61 | ARS250 A ball-type nipple 1/2M Bsp | 1 | | | | | 25 |

| Kit | P/N | Description | |
|-----|------------|------------------------------|---|
| K1 | 26.2017.24 | Spares kit -ARS250, 4x10pcs. | 1 |

(1) 26.2010.00 (2) 26.2010.10 (3) 26.2010.20 (4) 26.2010.30

P.A. SpA EQUIPAGGIAMENTI TECNICI DEL LAVAGGIO

Via Milano, 13 42048 Rubiera - (RE) ITALY
Tel +39 0522 623611 (ric aut) - Fax +39 0522 629600
Info@pa-etl.it - www.pa-etl.it

**COMPANY WITH
QUALITY SYSTEM
CERTIFIED BY DNV**

= ISO 9001 =