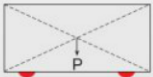
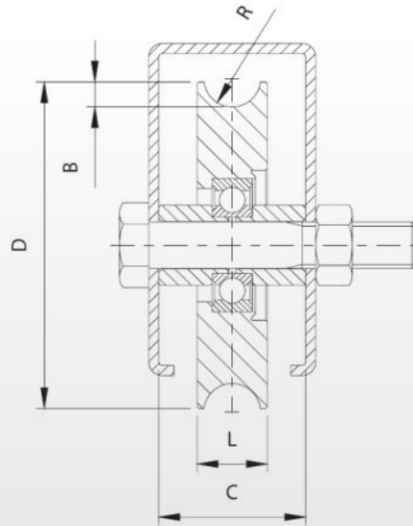










Ruota gola semitonda a 1 cuscinetto

Wheel with half-rounded groove and 1 bearing
 Galet avec gorge demi-ronde et 1 roulement
 Schiebetorrolle mit Rundrinne und 1 Kugellager



Peso uniformemente distribuito - Equally distributed weight

310  semitonda														
Articolo	Codice		B	C	D	L	R							
310-40	11504501 001	1	4	16	Ø 40	12	4,5	-	-	M8 x 30	50	50	5,10	
310-50	11504505 001	1	4	16	Ø 50	12	4,5	-	-	M8 x 30	70	30	4,70	
310-60	11504510 001	1	4	24	Ø 60	16,5	4,5	-	-	M10 x 45	100	12	4,10	
310-70	11504515 001	1	7,5	34	Ø 68	20	8,5	Ø 15	Ø 15	M14 x 70	190	12	5,80	
310-80	11504520 001	1	7,5	34	Ø 78	20	8,5	Ø 15	Ø 15	M14 x 70	200	10	6,40	
310-80S	11504525 001	1	9,5	34	Ø 78	24	10,3	Ø 19	Ø 19	M14 x 70	200	10	6,60	
310-90	11504530 001	1	7,5	34	Ø 88	21	8,5	Ø 15	Ø 15	M14 x 70	210	8	6,90	
310-90S	11504535 001	1	9,5	34	Ø 88	24	10,3	Ø 19	Ø 19	M14 x 70	210	8	7,00	
310-100	11504540 001	1	7,5	34	Ø 98	21	8,5	Ø 15	Ø 15	M14 x 70	220	8	8,70	
310-100S	11504545 001	1	9,5	34	Ø 98	24	10,3	Ø 19	Ø 19	M14 x 70	220	8	8,80	
310-120	11504550 001	1	9,5	34	Ø 117	25	10,3	Ø 19	Ø 19	M14 x 70	240	6	10,40	
310-140	11504560 001	1	9,5	44	Ø 137	25	10,3	Ø 19	Ø 19	M16 x 70	270	2	5,00	
310-160	11504570 001	1	9,5	44	Ø 157	25	10,3	Ø 19	Ø 19	M16 x 70	290	2	6,60	
310-200	11504580 001	1	9,5	44	Ø 197	25	10,3	Ø 19	Ø 19	M16 x 70	330	2	10,70	

